

Ventilation Equipment
Hood without fan motor for 6 on 6 GN
2/1 or 6 on 10 GN 2/1 stacked lengthwise
combi ovens

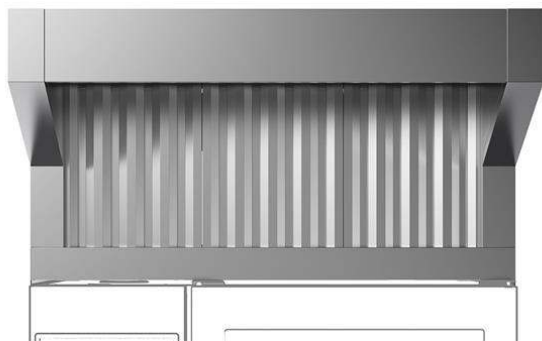
ITEM # _____

MODEL # _____

NAME # _____

SIS # _____

AIA # _____



922736 (HOB521)

Exhaust hood without fan for
stacking 6+6 or 6+10 GN 2/1
ovens

Short Form Specification

Item No. _____

- Constructed in 304 AISI stainless steel
- Equipped with labyrinth filters in 304 AISI stainless steel (positioned on front)
- Suitable for installation on 6 on 6 GN 2/1 or 6 on 10 GN 2/1 STACKED LW COMBI OVENS.

Main Features

- Filtering surface protects against fire hazard.
- Requires connection to an external exhaust air duct.
- Frontal labyrinth and condensation filters are easy to remove and cleanable in a dishwasher.
- Can be used with 6 on 6 GN 2/1 or 6 on 10 GN 2/1 stacked LW combi ovens.
- Double step door opening (PNC 922265) is suggested to improve filtering performance.
- Calculate the air exchange rate for the complete kitchen environment and ensure the compliance with ventilation norms (e.g. VDI 2052 Standard for ventilation of commercial kitchens - or any local reference). An insufficient air exchange rate may cause malfunctioning of the hood.

Construction

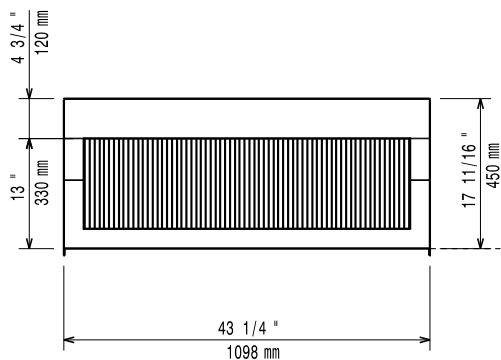
- Constructed entirely in 304 AISI stainless steel.
- Prefiltering of exhaust steam through stainless steel labyrinth filters.
- Developed and produced in ISO 9001, ISO 14001 and ISO 50001 certified factory.
- Must be installed in a space where normal aeration, according to regulations, is present.

Optional Accessories

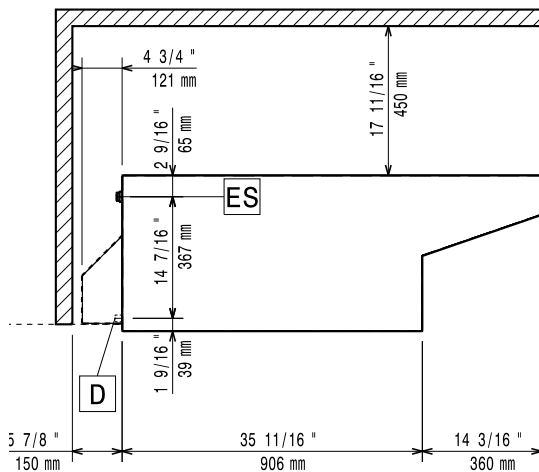
- Hood Hopper to directly connect the Hood to the centralized ventilation system, for Standard Hoods (with fan motor) and Hoods without fan motor PNC 922751 □

APPROVAL: _____

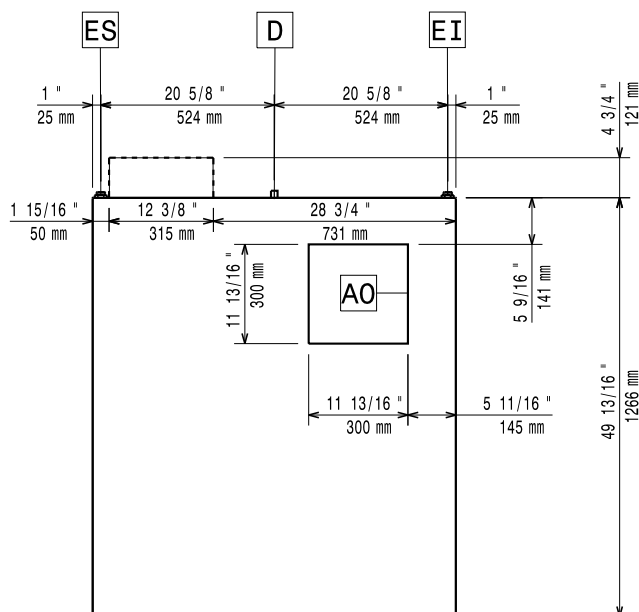
Front



Side



Top



Key Information:

External dimensions, Width:	1098 mm
External dimensions, Depth:	1266 mm
External dimensions, Height:	450 mm
Net weight:	29 kg
Shipping weight:	48 kg

Air Emission:

Air capacity:	922736 (HOB521)	1200-1500 m ³ /h
---------------	-----------------	-----------------------------